





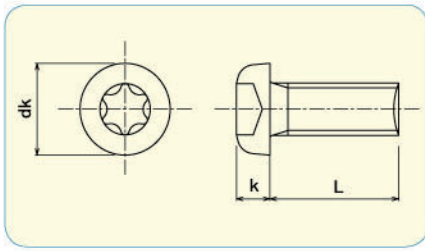


7. 6-Lobe Screws

	PAN HEAD 6-Lobe MACHINE SCREW	Steel / Zinc 3Cr. Plated , Steel / Zinc Black 3Cr. Plated	P.2
	FLAT HEAD 6-Lobe MACHINE SCREW	Steel / Zinc 3Cr. Plated , Steel / Zinc Black 3Cr. Plated	P.2
	TRUSS HEAD 6-Lobe MACHINE SCREW	Steel / Zinc 3Cr. Plated , Steel / Zinc Black 3Cr. Plated	P.3
	6-Lobe SOCKET CAP SCREW	Stainless Steel A2	P.4
	BUTTON HEAD 6-Lobe SOCKET SCREW	Stainless Steel A2	P.5
	FLAT HEAD 6-Lobe SOCKET SCREW	Stainless Steel A2	P.6

PAN HEAD 6-Lobe MACHINE SCREW



- **Material · plating**
Steel / Zinc 3Cr. Plated
Steel / Zinc Black 3Cr. Plated

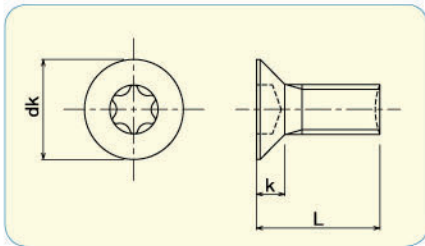


	M3	M4	M5	M6
dk	5.5	7	9	10.5
k	2	2.6	3.3	3.9

		pcs / Box			
L	d	M3	M4	M5	M6
6		2500			
8		2000	2000		
10		2000	1500	900	600
12			1500	800	500
16				700	400

6-Lobe
SCREWS

FLAT HEAD 6-Lobe MACHINE SCREW



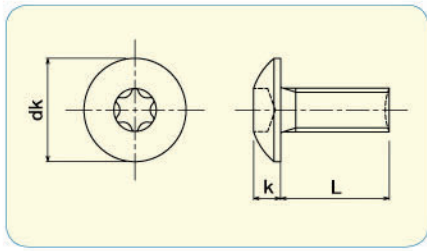
- **Material · plating**
Steel / Zinc 3Cr. Plated
Steel / Zinc Black 3Cr. Plated



	M3	M4	M5	M6
dk	6	8	10	12
k	1.75	2.3	2.8	3.4

		pcs / Box			
L	d	M3	M4	M5	M6
6		3000			
8		3000	2000		
10		2000	1500	1000	
12			1500	1000	500
15					500
16				700	
20					400
25					500
30					400

TRUSS HEAD 6-Lobe MACHINE SCREW



- **Material · plating**
 Steel / Zinc 3Cr. Plated
 Steel / Zinc Black 3Cr. Plated

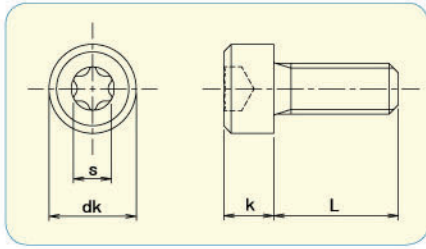


	M3	M4	M5	M6	M8
dk	6.9	9.4	11.8	14	17.8
k	1.9	2.5	3.1	3.7	4.8

		pcs / Box				
d	L	M3	M4	M5	M6	M8
6		2000				
8		1500	1500			
10		1500	1000	800		
12			1000	700	400	
15			1000			
16			900	500	300	150
20			700			150
25			500			150
30			500			

6-Lobe
SCREWS

6-Lobe SOCKET CAP SCREW



● **Material**
Stainless Steel A2



RoHS Directive Compliance



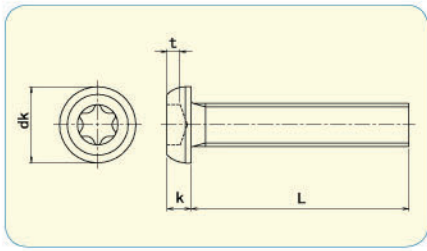
	M3	M4	M5	M6	M8	M10	M12
dk	5.5	7	8.5	10	13	16	18
k	3	4	5	6	8	10	12

pcs / Box

L \ d	M3	M4	M5	M6	M8	M10	M12
4	50						
5	50	50					
6	50	50	50				
8	50	50	50	50			
10	50	50	50	50			
12	50	50	50	50			
14	50	50	50	50			
15	50	50	50	50	50		
16	50	50	50	50	50	50	
20	50	50	50	50	50	50	
25		50	50	50		50	
30				50	50	50	30
35				50	50	50	30
40						50	30
45				50			

6-Lobe
SCREWS

BUTTON HEAD 6-Lobe SOCKET SCREW



● **Material**
Stainless Steel A2

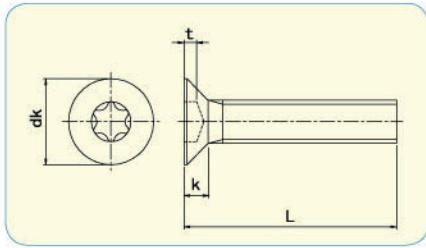


	M3	M4	M5	M6	M8	M10
dk	5.7	7.6	9.5	10.5	14	17.5
k	1.65	2.2	2.75	3.3	4.4	5.5

		pcs / Box					
L \ d	M3	M4	M5	M6	M8	M10	
5	50						
6	50	50					
8	50	50	50	50			
10	50	50	50	50	50		
12	50	50	50	50	50		
15	50	50	50	50	50	50	
16	50	50	50	50	50	50	
20	50	50	50	50	50		
25		50	50	50	50	50	
30				50	50	50	
35					50		
40						50	

6-Lobe
SCREWS

FLAT HEAD 6-Lobe SOCKET SCREW



- **Material**
Stainless Steel A2



RoHS Directive Compliance



	M3	M4	M5	M6	M8
dk	6.72	8.96	11.2	13.44	17.92
k	1.86	2.48	3.1	3.72	4.96

		pcs / Box				
L \ d	M3	M4	M5	M6	M8	
6	50	50				
8	50	50	50	50		
10	50	50	50	50		
12	50	50	50	50		
15	50	50	50	50	50	
16	50	50	50	50	50	
20	50	50	50	50	50	
25		50	50	50	50	
30				50	50	
35					50	
40					50	

G-Lobe
SCREWS