

# Stainless Steel

## SUS 316L

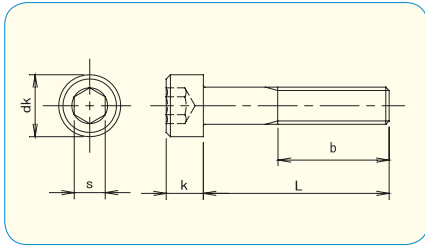


INDEX		PAGE
HEX SOCKET CAP SCREW ISO 4762 / JIS B1176 / DIN 912	- - - - -	-2
HEX SOCKET SET SCREW CUP POINT ISO 4029 / JIS B1177 / DIN 916	- - - - -	-3
HEX SOCKET SET SCREW FLAT POINT ISO 4026 / JIS B1177 / DIN 913	- - - - -	-3
HEX HEAD CAP SCREW JIS B1180 appendix	- - - - -	-4-5
CROSS RECESS PAN HEAD MACHINE SCREW JIS B1111 appendix	- - - - -	-6
CROSS RECESS FLAT HEAD MACHINE SCREW JIS B1111 appendix	- - - - -	-7
CROSS RECESS TRUSS HEAD MACHINE SCREW JIS B1111 appendix	- - - - -	-8
SLOTTED FLAT HEAD BOLT JIS B1179	- - - - -	-8
HEX NUT, JIS type 1 JIS B1181 appendix	- - - - -	-9
HEX NUT, JIS type 2 JIS B1181 appendix	- - - - -	-9
HEX NUT, JIS type 3 (JAM NUT) JIS B1181 appendix	- - - - -	-10
HEX NUT, height 1xd	- - - - -	-10
ROUND WASHER	- - - - -	-11
SPRING WASHER	- - - - -	-11
U BOLT	- - - - -	-12



This mark means "do not contain materials limited of RoHS Directive".  
(Lead / Cadmium / Mercury / 6 Chromium / PBB / PBDE)

# HEX SOCKET CAP SCREW ISO 4762 / JIS B1176 / DIN 912



● Material  
**SUS 316L** Stainless Steel A4



	M3	M4	M5	M6	M8	M10	M12	M14
dk	5.5	7	8.5	10	13	16	18	21
k	3	4	5	6	8	10	12	14
s	2.5	3	4	5	6	8	10	12

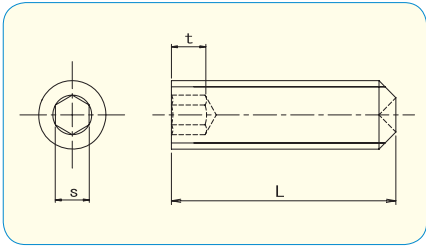


pcs / Box

L \ d	M3	M4	M5	M6	M8	M10	M12	M14
4	500	500						
5	500	500	300					
6	500	500	300	300				
8	500	500	300	300				
10	500	500	300	300	200			
12	500	500	300	300	200			
14	500	500	300	300	200			
15	500	500	300	300	200	100	100	
16	500	500	300	300	200	100	100	
18	500	500	300	300	200			
20	500	500	300	300	200	100	100	
25	* 500	500	300	300	200	100	100	30
30	* 500	* 500	* 300	300	200	100	100	30
35	* 500	* 500	* 300	* 300	200	100	100	30
40	* 500	* 500	* 300	* 300	* 200	100	100	30
45	* 500	* 500	* 300	* 300	* 200	* 100	100	30
50	* 500	* 500	* 300	* 300	* 200	* 100	* 100	30
55		* 500	* 300	* 300	* 200	* 100	* 100	
60		* 500	* 300	* 300	* 200	* 100	* 100	* 30
65		* 500	* 300	* 300	* 200	* 100	* 100	
70		* 500	* 300	* 300	* 200	* 100	* 100	
75		* 500	* 300	* 300	* 200	* 100	* 100	
80		* 500	* 300	* 300	* 200	* 100	* 100	
85				* 300	* 200		* 100	
90				* 300	* 200	* 100	* 100	
95				* 300	* 200			
100				* 300	* 200	* 100	* 100	
110						* 100	* 100	
120						* 100	* 100	
130						* 100	* 100	
140						* 100	* 100	
150						* 100	* 100	

\* ... Half thread

# HEX SOCKET SET SCREW CUP POINT ISO 4029 / JIS B1177 / DIN 916



●Material  
**SUS 316L** Stainless Steel A4



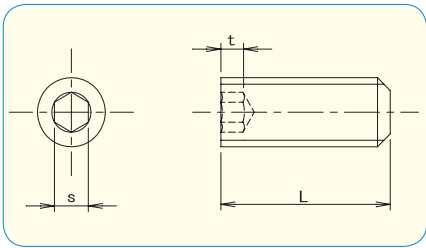
	M3	M4	M5	M6	M8	M10	M12
s	1.5	2	2.5	3	4	5	6
t	2	2.5	3	3.5	5	6	8



RoHS Directive Compliance

		pcs / Box					
L \ d	M3	M4	M5	M6	M8	M10	M12
3	200						
4	200	200					
5	200	200	200				
6	200	200	200	100			
8	200	200	200	100	100		
10	200	200	200	100	100	100	
12	200	200	200	100	100	100	100
14	200	200	200	100	100		
15	200	200	200	100	100	100	100
16	200	200	200	100	100	100	100
18	200	200	200	100	100	100	100
20	200	200	200	100	100	100	100
25		200	200	100	100	100	100
30		200	200	100	100	100	100
35			200	100	100	100	100
40			200	100	100	100	100
45				100	100	100	100
50				100	100	100	100
60						100	100

# HEX SOCKET SET SCREW FLAT POINT ISO 4026 / JIS B1177 / DIN 913



●Material  
**SUS 316L** Stainless Steel A4



	M16	M20	M24
s	8	10	12
t	10	12	15

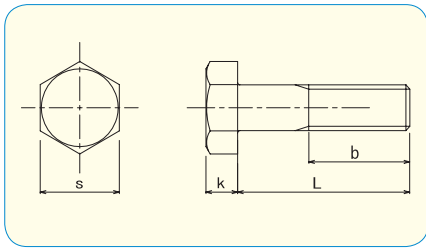


RoHS Directive Compliance

		pcs / Box		
L \ d	M16	M20	M24	
16	30			
20	30	15		
25	30	15		
30	30	15		
35	30	15		
40	30	15	10	

		pcs / Box		
L \ d	M16	M20	M24	
45	30	15		
50	30	15	10	
60	30	15	10	
70	30	15		
80	30	15	10	
100	30	15	10	

# HEX HEAD CAP SCREW JIS B1180 appendix



● Material  
**SUS 316L** Stainless Steel A4



	M3	M4	M5	M6	M8	M10	M12	M14	M16	M18	M20
s	5.5	7	8	10	13	17	19	22	24	27	30
k	2	2.8	3.5	4	5.5	7	8	9	10	12	13

		pcs / Box										
L	d	M3	M4	M5	M6	M8	M10	M12	M14	M16	M18	M20
6		300	300	200								
8		300	300	200								
10		300	300	200	200	200						
12		300	300	200	200	200						
14			300	200	200	200						
15		300	300	200	200	200	100					
16		300	300	200	200	200	100	50				
18			300	200	200	200						
20		300	300	200	200	200	100	50				
22			300	200	200	200						
25		300	300	200	200	200	100	50	50	50		
30		300	300	200	200	200	100	50	50	50	30	30
35			300	200	200	200	100	50	50	50	30	30
40			300	200	200	200	* 100	* 50	50	50	30	30
45			300	200	200	200	* 100	* 50	* 50	50	30	30
50			300	200	200	200	* 100	* 50	* 50	* 50	30	30
55				200	200	200	* 100	* 50	* 50	* 50	30	30
60				200	200	200	* 100	* 50	* 50	* 50	* 30	* 30
65				200	200	200	* 100	* 50	* 50	* 50	* 30	* 30
70					200	200	* 100	* 50	* 50	* 50	* 30	* 30
75				200	200	200	* 100	* 50	* 50	* 50	* 30	* 30
80					200	* 200	* 100	* 50	* 50	* 50	* 30	* 30
85					200	* 200	* 100	* 50	* 50	* 50	* 30	* 30
90					200	* 200	* 100	* 50	* 50	* 50	* 30	* 30
95					200	* 200	* 100	* 50	* 50	* 50	* 30	* 30
100					200	* 200	* 100	* 50	* 50	* 50	* 30	* 30
105							* 100	* 50		* 50		* 30
110						* 200	* 100	* 50	* 50	* 50	* 30	* 30
115							* 100	* 50		* 50		* 30
120						* 200	* 100	* 50	* 50	* 50	* 30	* 30
125							* 100	* 50		* 50		* 30
130						* 200	* 100	* 50	* 50	* 50	* 30	* 30
135							* 100	* 50		* 50		* 30
140						* 200	* 100	* 50	* 50	* 50	* 30	* 30
150						* 200	* 100	* 50	* 50	* 50	* 30	* 30
160							* 100	* 50	* 50	* 50	* 30	* 30
170							* 100	* 50	* 50	* 50	* 30	* 30
180							* 100	* 50	* 50	* 50	* 30	* 30
190							* 100	* 50	* 50	* 50		* 30
200							* 100	* 50	* 50	* 50	* 30	* 30
210								* 50		* 50		* 30
220								* 50		* 50		* 30
230								* 50		* 50		* 30
250							* 100	* 50	* 50	* 50		* 30
280										* 50		* 30
300										* 50		* 30

\* ... Half thread

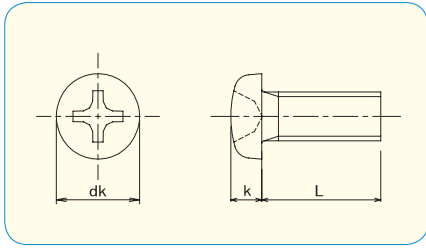
	M22	M24	M27	M30
s	32	36	41	46
k	14	15	17	19

pcs / Box

L \ d	M22	M24	M27	M30
40	30	20		
45	30	20		
50	30	20		
55	30	20		
60	* 30	20	3	3
65	* 30	20	* 3	3
70	* 30	* 20	* 3	3
75	* 30	* 20	* 3	3
80	* 30	* 20	* 3	* 3
85	* 30	* 20	* 3	* 3
90	* 30	* 20	* 3	* 3
95	* 30	* 20	* 3	* 3
100	* 30	* 20	* 3	* 3
105	* 30	* 20	* 3	* 3
110	* 30	* 20	* 3	* 3
115	* 30	* 20	* 3	* 3
120	* 30	* 20	* 3	* 3
125	* 30	* 20	* 3	* 3
130	* 30	* 20	* 3	* 3
135	* 30	* 20		* 3
140	* 30	* 20	* 3	* 3
150	* 30	* 20	* 3	* 3
160	* 30	* 20	* 3	* 3
170	* 30	* 20		* 3
180	* 30	* 20	* 3	* 3
190	* 30	* 20		* 3
200	* 30	* 20	* 3	* 3
210	* 30			
220	* 30			
230	* 30			
250	* 30	* 20		* 3

\* ... Half thread

**CROSS RECESS PAN HEAD MACHINE SCREW JIS B1111 appendix**



● **Material**  
**SUS 316L** Stainless Steel A4



	M3	M4	M5	M6	M8
dk	5.5	7	9	10.5	14
k	2	2.6	3.3	3.9	5.2

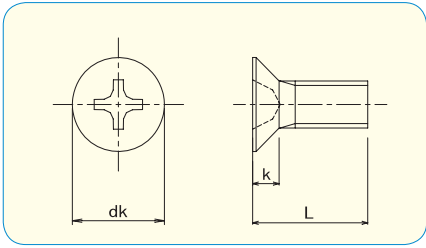


RoHS Directive Compliance

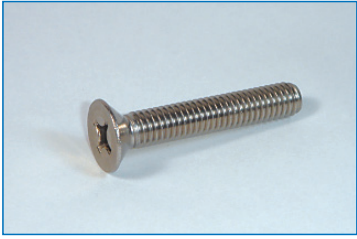
		pcs / Box				
L	d	M3	M4	M5	M6	M8
5		500				
6		500	300	200		
8		500	300	200		
10		500	300	200	100	
12		500	300	200	100	50
15		500	300	200	100	50
16		500	300	200	100	50
20		500	300	200	100	50
25		500	300	200	100	50
30		500	300	200	100	50
35			300	200	100	50
40		500	300	200	100	50
45			300	200	100	50
50			300	200	100	50
55			300	200	100	50
60			300	200	100	50
65			300	200	100	50
70				200	100	50
75				200	100	50
80					100	50
90					100	50
100					100	50



**CROSS RECESS FLAT HEAD MACHINE SCREW JIS B1111 appendix**



●Material  
**SUS 316L** Stainless Steel A4



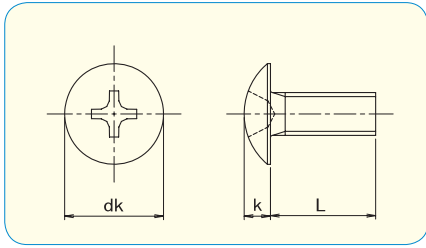
	M3	M4	M5	M6	M8
dk	6	8	10	12	16
k	1.75	2.3	2.8	3.4	4.4



pcs / Box

L \ d	M3	M4	M5	M6	M8
5	500				
6	500	300			
8	500	300	200		
10	500	300	200	100	
12	500	300	200	100	
15	500	300	200	100	50
16	500	300	200	100	50
20	500	300	200	100	50
25	500	300	200	100	50
30	500	300	200	100	50
35		300	200	100	50
40	500	300	200	100	50
45		300	200	100	50
50		300	200	100	50
55		300	200	100	50
60		300	200	100	50
65		300	200	100	50
70			200	100	50
75			200	100	50
80				100	50
90				100	50
100				100	50

## CROSS RECESS TRUSS HEAD MACHINE SCREW JIS B1111 appendix



- Material  
SUS 316L Stainless Steel A4



	M4	M5
dk	9.4	11.8
k	2.5	3.1

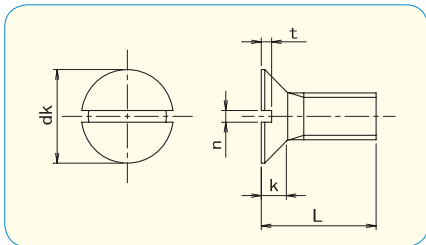


RoHS Directive Compliance

pcs / Box

L \ d	M4	M5
6	300	
8	300	200
10	300	200
12	300	200
15	300	200
16	300	200
20	300	200
25	300	200
30	300	200

## SLOTTED FLAT HEAD BOLT JIS B1179



- Material  
SUS 316L Stainless Steel A4



	M10	M12
dk	20	24
k	5.5	6.5



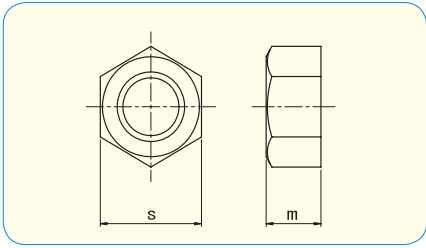
RoHS Directive Compliance

pcs / Box

L \ d	M10	M12
20	70	50
25	70	50
30	70	50
35	70	50
40	70	50
50	70	50
60	70	50
70	70	50
80	70	50
100	70	50



## HEX NUT, JIS type 1 JIS B1181 appendix



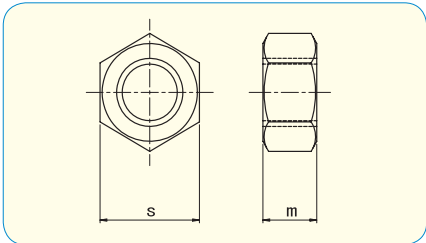
●Material  
**SUS 316L** Stainless Steel A4



	Box q'ty	SIZE	
		s	m
M2	100	4	1.6
M3	100	5.5	2.4
M4	100	7	3.2
M5	100	8	4
M6	100	10	5
M8	100	13	6.5
M10	100	17	8
M12	100	19	10
M14	100	22	11
M16	100	24	13
M18	100	27	15
M20	100	30	16

	Box q'ty	SIZE	
		s	m
M22	100	32	18
M24	100	36	19
M27	100	41	22
M30	100	46	24
M33	100	50	26
M36	100	55	29
M39	100	60	31
M42	100	65	34
M45	100	70	36
M48	100	75	38
M52	100	80	42

## HEX NUT, JIS type 2 JIS B1181 appendix

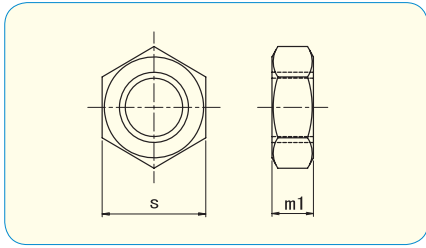


●Material  
**SUS 316L** Stainless Steel A4



	Box q'ty	SIZE	
		s	m
M8	100	13	6.5
M10	100	17	8
M12	100	19	10
M14	100	22	11
M16	100	24	13
M18	100	27	15
M20	100	30	16
M22	100	32	18
M24	100	36	19

## HEX NUT, JIS type 3 ( JAM NUT ) JIS B1181 appendix



● Material  
**SUS 316L** Stainless Steel A4



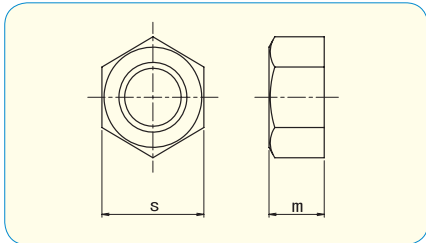
RoHS Directive Compliance



	Box q'ty	SIZE	
		s	m1
M6	100	10	3.6
M8	100	13	5
M10	100	17	6
M12	100	19	7
M14	100	22	8
M16	100	24	10
M18	100	27	11
M20	100	30	12
M22	100	32	13
M24	100	36	14

	Box q'ty	SIZE	
		s	m1
M27	100	41	16
M30	100	46	18
M33	100	50	20
M36	100	55	21
M39	100	60	23
M42	100	65	25
M45	100	70	27
M48	100	75	29
M52	100	80	31

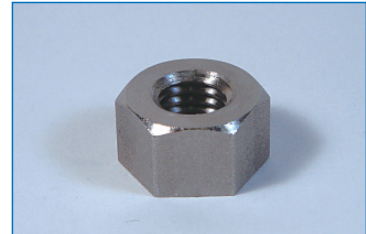
## HEX NUT, height 1xd



● Material  
**SUS 316L** Stainless Steel A4

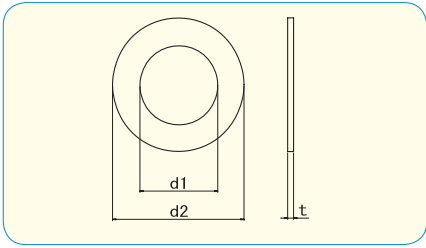


RoHS Directive Compliance

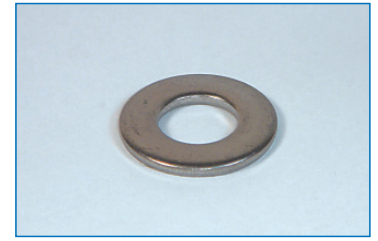


	Box q'ty	SIZE	
		s	m
M10	100	17	10
M12	100	19	12
M14	100	22	14
M16	100	24	16
M18	100	27	18
M20	100	30	20
M22	100	32	22
M24	100	36	24

# ROUND WASHER JIS B 1256



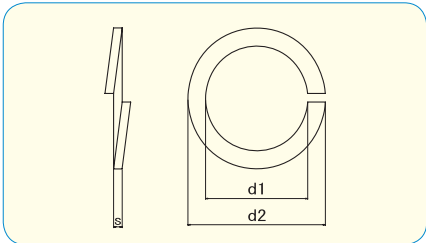
●Material  
**SUS 316L** Stainless Steel A4



		pcs / Box		
	Box q'ty	SIZE		
		d1	d2	t
4	100	4.3	9	0.8
5	100	5.3	10	1
6	100	6.4	12.5	1.6
8	100	8.4	17	1.6
10	100	10.5	21	2
12	100	13	24	2.5
14	100	15	28	2.5
16	100	17	30	3
18	100	19	34	3
20	100	21	37	3

		pcs / Box		
	Box q'ty	SIZE		
		d1	d2	t
22	100	23	39	3
24	100	25	44	4
27	100	28	50	4
30	100	31	56	4
33	100	34	60	5
36	100	37	66	5
42	100	43	78	7
45	100	46	85	7
48	100	50	92	8

# SPRING WASHER JIS B 1251 appendix



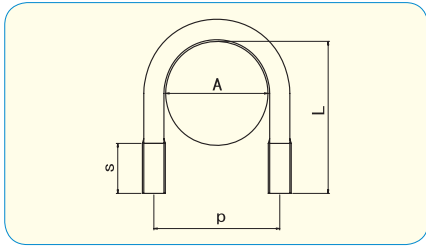
●Material  
**SUS 316L** stainless steel A4



		pcs / Box	
	Box q'ty	SIZE	
		d2	t
2	100	4.4	0.5
2.6	100	5.3	0.6
3	100	5.9	0.7
4	100	7.6	1
5	100	9.2	1.3
6	100	12.2	1.5
8	100	15.4	2
10	100	18.4	2.5
12	100	21.5	3
14	100	24.5	3.5

		pcs / Box	
	Box q'ty	SIZE	
		d2	t
16	100	28	4
18	100	31	4.6
20	100	33.8	5.1
22	100	37.7	5.6
24	100	40.3	5.9
27	100	45.3	6.4
30	100	49.9	7.5
33	100	54.7	8.2
36	100	59.1	9
39	100	63.1	9.5
42	100	67	9.5
45	100	70	9.5

# U BOLT



● **Material**  
**SUS 316L** Stainless Steel A4



RoHS Directive Compliance



pcs / Box

		A pipe dia mm	M6	M8	M10	M12	M16	M20
8A	for 1/4	13.2	50					
10A	3/8	16.7	50					
15A	1/2	21.2	50	30	20			
20A	3/4	27.2	50	30	20			
25A	1"	34.0	50	30	20			
32A	1 1/4	42.7	50	30	20			
40A	1 1/2	48.6	50	30	20			
50A	2"	60.5	50	30	20	10		
65A	2 1/2	76.3	50	30	20	10		
80A	3"	89.1	50	30	20	10		
100A	4"	114.3		30	20	10	5	
125A	5"	139.8			20	10	5	
150A	6"	165.2			20	10	5	
200A	8"	216.3				10	5	3
250A	10"	267.4					5	3
300A	12"	318.5					5	3
350A	14"	355.6						3

